

50 Years of Preservation

THE TEXAS HISTORICAL COMMISSION'S ACCOMPLISHMENTS
OF THE PAST FIVE DECADES AND 2001-02 BIENNIUM





*Our history is the common thread —
the triumphs and
tribulations that formed our state.*

*We inherited a bountiful legacy
from the Texans who
came before us and it is our job
to preserve it for generations
of Texans to come.*



TABLE OF CONTENTS

- 2 Letter from the Executive Director
 - 3 The Importance of Historic Preservation
 - 4 An Accomplished Agency
 - 1953–1979
 - 1980–2003
 - A Vision for the Future
 - 20 Biennial Report 2001–02
 - History
 - Archeology
 - Architecture
 - Community Assistance
 - Public Information and Outreach
 - Friends of the Texas Historical Commission
 - 25 Conclusion
 - 27 Appendices
 - Commission Members
 - Organizational Chart
 - Financial Report
 - Grants Awarded
 - Designations
-

Preceding page: The 1882 First National Bank building in Gainesville, a Texas Main Street City

Photo courtesy TxDOT



Detail from the Ellis County Courthouse

LETTER FROM THE EXECUTIVE DIRECTOR

Dear Friends,

Fifty years ago, Texas legislators saw a need to coordinate efforts to preserve the state's history. They created the Texas State Historical Survey Committee to identify important historic sites across the state and interpret the stories for all Texans. In 2003, the Texas Historical Commission (THC) will celebrate its 50th anniversary.

Recognized nationally for initiatives like the Texas Main Street Program and the Texas Historic Courthouse Preservation Program, the THC leads the state in historic preservation efforts. Since 1953, we have protected and preserved ancient Native American campsites, early European settlements, elaborate county courthouses and modest shotgun houses. We have helped communities preserve their historic character and create visions for their future. We have assisted Texans across the state with questions about archeology, architecture, history, economic development and heritage tourism.

Successful preservation requires cooperative partnerships, and the THC is cultivating them throughout Texas. We are working to maximize the potential of our statewide network through *Preserving our Heritage: A Statewide Plan for Texas*, a roadmap for the state's preservation efforts that we published in 2002.

The following special report identifies the THC's achievements over the last two years and takes a nostalgic look at the last five decades. We are proud of our accomplishments, and plan to celebrate the anniversary with events and activities throughout Texas to raise awareness of the importance of historic preservation. I invite you to join us as we celebrate 50 Years of Preserving Our Texas Heritage!

Sincerely,

E. Lawrence Oaks, Executive Director

THE IMPORTANCE OF PRESERVATION

The heritage of Texas is as rich and diverse as its people and its landscape. Each hometown has a unique character, whether it's the rustic charm and hospitality of a small town or the urban sophistication of one of our big cities. From El Paso to Texarkana, Amarillo to Brownsville, our cultural resources range from the remains of prehistoric Native American campsites to grand Romanesque Revival courthouses.

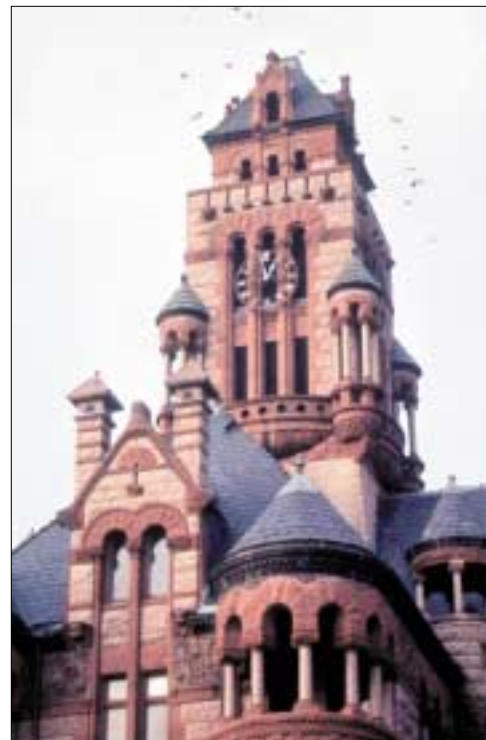
The tale of Texas includes contributions from countless cultures. Varied as we are, however, Texans share a great sense of place. Our history is the common thread — the triumphs and tribulations that formed our state. We inherited a bountiful legacy from the Texans who came before us and it is our job to preserve it for generations of Texans to come.

There are many advantages to preserving what is unique about our great state's past. Historic preservation creates new jobs, revitalizes downtown business districts, provides affordable quality housing and stimulates heritage tourism. When viewed in cost-benefit terms, historic preservation is one of the best investments available today. In addition, it can renew community pride and increase local interest and involvement.

The Texas Historical Commission (THC) is the state agency for historic preservation. The agency's mission is to protect and preserve the state's historic and prehistoric resources for the use, education, enjoyment and economic benefit of present and future generations. The 18 commissioners and 108 staff members of the THC believe that identifying, preserving and interpreting Texas' historic resources benefits all Texans.

They also believe it takes more than one state agency to lead the way. Preservation is a cooperative effort, and the THC's work is only as successful as its statewide partners. County historical commissions, local landmark commissions, private nonprofit organizations, foundations, businesses, schools and individuals all have important roles to play in preserving Texas history.

The THC's goals for this publication are to celebrate 50 Years of Preserving Our Texas Heritage and recognize the partners and programs that have made significant contributions to historic preservation in Texas.



Ellis County Courthouse



*Celebrating 50 Years of Preserving
Our Texas Heritage —*

*Ellis County Courthouse and the Ringling
Brothers parade, 1902, Waxahachie*

AN ACCOMPLISHED AGENCY

This year, the Texas Historical Commission is making history. The agency's 50th birthday may seem secondary compared to the momentous events that have unfolded in Texas' history; however, without the agency's preservation and promotion efforts, generations of future Texans would not enjoy the rich and diverse historical resources the Lone Star State offers. This is the story of how it began.

1953–1979: The First Quarter Century

Historic preservation has been an important part of Texas government since 1876, when the State Constitution authorized the Texas Legislature to “make appropriations for preserving and perpetuating memorials of the history of Texas.” In the 1930s, organizers of the state's centennial celebration worked with federal New Deal programs to restore historic buildings and erect historical markers around the state. Those distinctive markers can still be seen throughout Texas.

It was not until 1953, however, that the Texas Legislature, through Senate Concurrent Resolution 44, created the Texas State Historical Survey Committee to “study the subject of the preservation and dissemination of the records of Texas and Texans . . . or any article that bears evidence or connotation whatever of the manners, customs, thought and way of life of any period in Texas history.”

For the 18 committee members appointed by Gov. Allan Shivers, it was a big task to undertake. The Texas Legislature realized the urgency of taking immediate action, noting in the resolution, “Much source material is in danger of being lost, and many historical shrines in danger of being destroyed, unless the activities of all interested persons and agencies, public and private, are encouraged and coordinated . . .”

The committee held its first meeting on November 17, 1953 in Austin, and Gov. Shivers addressed the group. “It is not merely another Texas brag,” he said, “to claim that we are far richer in historical material than most of our sister states.”

1956 was a significant year in the history of the agency. County historical survey committees were created in Texas counties to carry out preservation work on the local level. By August 1956, 163 counties had organized committees. Today, the THC works with county historical commissions in a dynamic and positive partnership to preserve Texas' unique heritage. All 254 counties have a commission, and each is responsible for the preservation of countless historic buildings, artifacts, documents and other pieces of Texas history.

Also in 1956, the committee held its first gathering of preservationists from all over the state. Hundreds convened in Austin to discuss policies and procedures of the Texas State Historical Survey Committee, and county members were invited to discuss their projects and accomplishments. Today, more than 500 people attend the Annual Historic Preservation Conference, still hosted by the THC.

As early as 1954, a subcommittee led by Miss Ima Hogg of Houston recommended a new historical marker program to identify and interpret important surveyed sites. After years of discussion and debate, the first marker was placed in 1962 to interpret Camp Ford in Tyler. Forty years later, the marker program is still one of the THC's most visible, with more than 12,000 markers interpreting important sites throughout Texas.



*1936 Texas Centennial Commission marker,
Fort Ringgold*

*Opposite: Rotunda of the Cameron
County Courthouse, Brownsville*

Photo courtesy TxDOT





Old Cora Courthouse, Comanche

The 1960s brought the creation of two laws that would pave the way for many new programs. In 1963, the Texas Legislature revolutionized the Texas State Historical Survey Committee's work by passing what has been called the best historic preservation law in the country. The landmark law gave the committee a strong mandate and the legal authority to preserve and protect the heritage of all Texans. It included liberal powers to approve and erect historical markers, provide leadership for historic preservation in Texas and act as a resource for such work.

In 1966, the United States Congress passed the National Historic Preservation Act to ensure protection of the nation's prehistoric and historic resources. The act created the Historic Preservation Fund, which benefits programs in all states, and the National Register of Historic Places, which provides national recognition of a property's historical or architectural significance and denotes that it is worthy of preservation. As the State Historic Preservation Office, the THC and the National Park Service of the Department of the Interior jointly administered Historic Preservation Fund grants-in-aid to help preserve National Register sites. Section 106 of the National Historic Preservation Act requires every federal agency to "take into account" how each of its undertakings could affect historic properties. Today, the THC oversees the National Register, the Certified Local Government Program, Federal Historic Preservation Tax Incentives and survey programs on behalf of Texas, and reviews more than 10,000 projects annually under Section 106.

In 1969, the Texas Legislature passed the Antiquities Code of Texas to protect all cultural resources within the public domain of the state. The code also provided for an Antiquities Committee, now merged with the THC, to review applications for State Archeological Landmarks (SAL), a designation that bestows legal protection on a property or resource. At the same time, the Office of the State Archeologist transferred to the committee, and a statewide archeology program was established. During the last 35 years, the THC's Archeology Division has diligently preserved and protected numerous archeological projects and sites. During that same period, the Archeology Division reviewed more than 200,000 projects, called for more than 10,000 archeological investigations of more than 750,000 acres of land and managed the documentation of more than 10,000 archeological sites. Since the inception of the Antiquities Code of Texas in 1969, approximately 2,793 sites, including shipwrecks, received the protection of SAL designation.



Archeological stewards help professional archeologists excavate important sites.

Right: Children at an archeology fair piece clues together to interpret the past.

Opposite: These pictographs are in Panther Cave near Comstock.

Photo courtesy of National Park Service







The Sam Rayburn House Museum, Bonham

The Museum Services department was created in 1969 to assist small history museums in preserving and interpreting local history. Today, as part of the agency's History Programs Division, museum services staff members consult with museums throughout the state. Additional support and recognition come from an awards program, matching grants and the annual Winedale Museum Seminar, which celebrated its 30th anniversary in 2001. Since the museum grant program began in 1984, the Texas Historical Commission (THC) has awarded 307 grants in 99 counties, resulting in nearly \$200,000 to preserve Texas history.

Also in 1969, the growing agency received the 1856 Carrington-Covert House, 1883 Gethsemane Lutheran Church and 1940 Luther Hall. The agency has renovated all three buildings, and they now house agency offices.

In 1971, the committee received the unique opportunity to manage the 1916 Bonham home of former Texas congressman and Speaker of the United States House of Representatives, Sam Rayburn. Following an extensive restoration of the house and several outbuildings and the construction of a visitor center and caretaker's cottage, the THC welcomed the public to the Sam Rayburn House Museum in 1975. Today, the museum attracts more than 4,000 visitors each year.



The Texas Heritage Museum, Hillsboro

In 1973, the Texas Legislature revised the committee's enabling legislation to give it additional protective powers and expand its leadership role and educational responsibilities. The agency's name was officially changed to the Texas Historical Commission, reflecting the broader scope of its responsibilities. That same year, the Legislature established laws to encourage rehabilitation of county courthouses within the context of historic preservation. These laws, listed in Section 442.008 of the Texas Government Code, Chapter 442, are designed to safeguard courthouses from drastic changes or modifications. According to the law, the THC must review all proposed changes.

Throughout the 1970s, the THC continued to expand its existing programs and develop new ones. It was evident that the THC was coming into its own and would soon broaden the scope of historic preservation in Texas.



Right: Museum of the Big Bend, Alpine

Opposite: The THC's Carrington-Covert House after renovation



1980–2003: Programs, Partners and Progress

The 1980s became a decade of program development for the Texas Historical Commission (THC). In 1981, the THC created the Texas Main Street Program, a downtown revitalization effort affiliated with the National Trust for Historic Preservation. The Texas Main Street Program is among the most successful of its kind in the nation. To date, it has assisted more than 140 Texas cities. The program has resulted in the private reinvestment of more than \$880 million in Texas downtowns and neighborhood commercial districts, the creation of more than 19,000 jobs and the establishment of more than 4,800 new businesses. Since 1993, more than \$5 million in downtown infrastructure grants have been distributed to 33 Main Street communities through the U.S. Department of Housing and Urban Development's Community Development Block Grant Funds.

During the 1980s, in accordance with the National Historic Preservation Act and with funding from the Historic Preservation Fund, the THC initiated the Certified Local Government (CLG) Program in Texas. The first CLG was designated in 1986. The CLG Program is a unique local, state and federal government partnership for historic preservation designed to help cities and counties develop high standards of preservation. Local governments that participate in the CLG Program act independently to develop and maintain successful preservation efforts. The THC administers the CLG program at the state level, and the National Park Service is the responsible federal agency. Today, there are 45 CLG communities in Texas, and the THC has distributed more than \$2.4 million in grants to assist their projects. These two innovative programs were well received in Texas and created new partnerships across the state, helping to increase awareness of the importance of historic preservation.

In the 1980s, it became increasingly obvious that lack of funding was a major obstacle for local historic preservation projects. The Texas Historic Preservation Program (1981) provided financial assistance to nonprofit organizations and political subdivisions for planning, acquisition and development projects on designated historic structures. To assist preservationists, the Texas Legislature created the Texas Preservation Trust Fund (TPTF) in 1989. The TPTF is an interest-earning pool of public and private monies. The earned interest and designated gifts are distributed yearly as matching grants to public and private owners of eligible historic properties and archeological sites. The first round of grants was awarded in 1997. To date, the TPTF has distributed more than \$2 million to assist 162 projects throughout the state.



Above: The Thomas Kraitchar, Jr. House, funded under the Texas Historic Preservation Program, in Burleson County is shown before (top) and after renovations.

Right: Georgetown is a Texas Main Street City.

Opposite: Floresville, a Main Street City, hosted the First Lady's tour at the Wilson County Courthouse.







Texas history has always been a popular tourist attraction, and heritage tourism can be an important economic development tool for Texas communities. The agency's heritage tourism initiative began in 1989, when the Texas Historical Commission published *Los Caminos del Rio: Legacies of the Borderlands*, a tourism guide highlighting a corridor along the lower Rio Grande area. The successful brochure was the predecessor to other tourism brochures. The agency soon produced *African Americans in Texas: Historical and Cultural Legacies* and *Texas in the Civil War*.

In 1994–95, the THC put a \$2.5 million federal transportation enhancement grant from the Texas Department of Transportation (TxDOT) to work by creating a database of historic sites. The TxDOT grant allowed the THC to launch the Historical Markers 2000 program, a survey to locate historical markers, monitor their condition, provide repairs and ensure the important historic sites in Texas are properly interpreted. Today, the online Texas Historic Sites Atlas features more than 200,000 historic site records, including data on Official Texas Historical Markers and National Register of Historic Places properties in Texas. Visitors to the THC web site can search the database to discover the sites that make their hometown unique or visit the Atlas' interactive maps to display historic site locations.

Also in the mid-1990s, the THC formed the Texas Courthouse Alliance, a program which raised public awareness for the need to restore Texas' historic county courthouses. The effort, funded by a federal transportation enhancement grant, resulted in a statewide database of all Texas courthouses, as well as an intensive study and analysis of the most unique or endangered ones. It was also an impetus for the current Texas Historic Courthouse Preservation Program, which, to date, has awarded approximately \$100 million in courthouse preservation grants.



Above: The Presidio County Courthouse was completed in 1887.

Opposite: The Presidio County Courthouse was rededicated in 2002.

Right: The King Ranch historical marker educates tourists.



KING RANCH, INC. ARCHIVES, KINGSVILLE, TEXAS

Three generations of vaqueros from the King Ranch, Kingsville



TxDOT



Robert Cavalier, Sieur de La Salle

In 1995, THC archeologists made an amazing discovery off the Texas coast: French explorer Robert Cavalier, Sieur de La Salle's lost ship the *Belle*. In 1996 and 1997, the team excavated the ship and its cargo from the ocean floor. The *Belle* was wrecked in Matagorda Bay in 1686, and is one of the most important shipwrecks ever discovered in North America. The excavation, conducted in a cofferdam, lasted almost a year and produced an amazing array of finds, including the hull of the ship, three bronze cannons, thousands of glass beads, bronze hawk bells, pottery and even the skeleton of a crew member. The one million artifacts represent a kit for building a 17th-century European colony in the New World and are a priceless collection of early Texas history. The project attracted international media attention, and was the subject of a NOVA documentary film on PBS.

From 1999–2002, the THC excavated Fort St. Louis, Texas' first European settlement, established by La Salle on the banks of Garcitas Creek near present-day Victoria. The excavation resulted in tens of thousands of artifacts, including cannons, musket balls, gunflints, pottery, coins and many other items used by the colonists. The most exciting discoveries included the skeletal remains of three French colonists, the setting trench for the star-shaped stockade wall, and wall foundations of La Salle's principal building.

Although the THC had been working with county historical commissions for years to preserve and mark historic cemeteries, in 1997 the Texas Legislature provided funding for the THC to implement a historic cemetery preservation program. The Bolivar Cemetery in Denton County was the first cemetery to receive the Historic Texas Cemetery designation. To date, there are 280 designated cemeteries throughout Texas.



R.W. PARVIN

Above: Children admire a cannon excavated from the Belle shipwreck.

Far left: Several of the nearly one million Belle artifacts found by archeologists

Left: One of the excavated artifacts

Opposite: Gravesite of Albert Sidney Johnston, with sculpture by noted Texas artist Elisabet Ney, Texas State Cemetery







In 1998, the Texas Historical Commission (THC) began the Texas Heritage Trails Program, an innovative tourism initiative that promotes travel to historic and cultural sites across the state. Using the Texas Department of Transportation's earlier travel trails as a marketing tool, the THC provides technical, marketing and financial assistance to 141 counties. Since the program began in 1998, the THC has provided more than \$750,000 in direct financial assistance through regional program, partnership and advertising grants.

The THC has evaluated 227 historic and cultural sites and developed travel brochures for the Texas Forts Trail Region, Texas Independence Trail Region, Texas Forest Trail Region and The Chisholm Trail. These brochures are popular with the traveling public and are a valuable tool in promoting heritage tourism in Texas. The THC has distributed more than 1.6 million brochures to date. These efforts have paid off. Monitored sites in the first two regions garnered a 13 percent average increase in visitation.

In 1999, Gov. George W. Bush and the Texas Legislature established the Texas Historic Courthouse Preservation Program to provide matching grants to Texas counties for the restoration of historic courthouses. In May 2000, the THC announced the first round of Texas Historic Courthouse Preservation Program grant recipients at its quarterly commission meeting. A year and a half later, the agency announced Round II grant recipients. In 2002, the THC awarded Round III grants in January, and Emergency Round III grants in April. Since 2000, the THC has awarded more than \$96 million to 46 counties for historic courthouse restoration projects.

The THC created the Visionaries in Preservation Program in 1999 to help communities develop clear paths to achieve their preservation goals. Communities with visionary leaders who consistently make a commitment to capitalizing on historic assets realize the rewards of economic development through downtown revitalization, heritage tourism and a high quality of life rooted in a strong sense of place and history.



Guard House, Fort Stockton



Above: A reenactment on the Texas Forts Trail

Right: Buffalo Soldiers

Opposite: Chapel ruins and the Officers' Quarters, Fort Davis

Photo courtesy TxDOT







A Juneteenth parade

In 2002, the Texas Historical Commission published *Preserving Our Heritage: A Statewide Plan for Texas*, a roadmap for preservation groups in Texas. The 10-year plan maximizes the potential of the agency's cooperative partnerships with local and federal governments, private nonprofit groups, foundations, businesses, schools and individuals by working toward five common goals:

- Leadership/Teambuilding
- Vision/Planning
- Education/Awareness
- Resource Identification, Preservation and Interpretation
- Resource Development

A Vision for the Future

In honor of the THC's 25th anniversary in 1979, the agency published *The First Quarter Century*, a book documenting the accomplishments of a still relatively new commission. Optimistic after 25 successful years preserving Texas' historic resources, THC staff and commissioners predicted a promising future for historic preservation in Texas, thanks to a purposeful program and a growing movement.

Twenty-five years later, it seems they were right. The THC has accomplished amazing things in its first 50 years; however, the agency recognizes the challenges ahead and still believes that planning is the key to thriving historic resources in the future.

Today, we call this kind of planning "visioning." Programs like the Visionaries in Preservation Program and publications like the statewide plan are helping Texans look to the future to preserve the fabric of our past. Preservation success will come from strong, educated advocates, concerned citizens and quality outreach programs.

The THC invites all Texans to be partners in preservation. Everyone — citizens, businesses, nonprofit organizations, foundations, local governments and state agencies — can play a role in Texas' future by working to preserve our historic and prehistoric resources. Join us as we celebrate our first 50 years, and help us plan for the next 50 to ensure that future generations of Texans will benefit from historic preservation.



Children enjoying a Deiz y Seis festival

Right: Storytelling at the Pioneer Living History Center in Gonzales

*Opposite: A parade in historic downtown Dallas
Photo courtesy TxDOT*





BIENNIAL REPORT INFORMATION

HISTORY

■ County Historical Commissions (CHC)

In the last two years, the History Programs Division staff published a new and improved *Texas Preservation Handbook for County Historical Commissions* and set up an email listserv for CHC communication.

In addition, CHCs participated in regional meetings, the Annual Historic Preservation Conference, and in heritage tourism/trail area meetings. Forty-five CHCs received Distinguished Service Awards in recognition of ongoing efforts and accomplishments at the 2001 and 2002 Annual Historic Preservation Conferences. According to annual reports received from CHCs, more than 4,500 people donated more than 215,000 volunteer hours to local preservation efforts in counties throughout the state.

■ Historical Markers

Historical markers and designations interpret, promote and protect historic and cultural resources that are worthy of preservation. Texas has one of the most active and successful historical marker programs in the country; it includes both subject markers, which are educational in nature, and Recorded Texas Historic Landmark markers, which, in addition to their educational focus, convey a legal designation for historic structures and buildings. For a listing, by county, of markers placed during the past biennium, please see the Appendices.

■ National Register of Historic Places

The Texas Historical Commission (THC) facilitated 76 successful nominations to the National Register of Historic Places from September 2000 to August 2002, resulting in 1,269 properties being added to the register.

■ Cemetery Preservation

During the 2001–02 biennium, 216 cemeteries in 105 counties received the Historic Texas Cemetery designation. The cemetery staff also began working on an extensive survey of historic cemeteries in 70 of the state's fastest-growing counties.

■ Museum Services

The THC's Museum Services Program provides assistance to small history museums across the state through on-site consultations, training workshops, resource information and referrals, and educational materials. In addition, the History Museum Grants Program provides Texas history museums with assistance in preserving their collections and developing educational programs. During the past two years, 21 Texas history museums received museum grants from the THC.

■ Sam Rayburn House Museum

In June 2001, a curatorial position was re-established at the museum for the first time since 1986. The second Sam Rayburn Chili Cookoff was held in 2001 and included participation by former U.S. Navy crew members of the *USS Sam Rayburn* submarine. The Friends of Sam Rayburn and the Sam Rayburn House Museum hosted several events in 2002 that received regional and national attention — “An Evening with Will Rogers,” “9/11 Remembrance Day” and the third Sam Rayburn Chili Cookoff.



*The Stephen F. Austin State
Park in San Felipe*

■ Military Sites Program

The Military Sites Program established an ongoing Texas in World War II survey initiative. In addition, the staff facilitated the preservation of a portion of the Palmito Ranch battlefield in Cameron County and assisted with plans to transfer the property to the National Park Service. The program also provided funding for extensive restoration of the Texas Monument at Vicksburg, Mississippi, and assisted Navarro College in developing plans for a new facility for its extensive Civil War archival collection.

ARCHEOLOGY

■ State/Federal Reviews

In 2001–02, the Archeology Division reviewed more than 7,500 projects that could have had an adverse effect on historic properties in Texas. Based on those reviews, the THC performed more than 400 archeological investigations, surveyed tens of thousands of acres, and documented hundreds of archeological sites.

■ The *Belle*/Fort St. Louis

The La Salle Archeology Project — the *Belle* shipwreck project and the Fort St. Louis project — has helped communities tell the compelling story of early European colonies in Texas to tourists by exhibiting artifacts and promoting historic resources.

In the past biennium, the *Belle* has shifted to the conservation phase, in which every artifact is carefully identified, cleaned and preserved. The hull of the ship has been reconstructed and is undergoing chemical conservation treatment at Texas A&M University's Conservation Research Laboratory. The conservation of the ship's hull will take five to eight years. When it is complete, the *Belle*'s hull will become a major focal point at the Bob Bullock Texas State History Museum in Austin, where visitors can see it and learn the ship's perilous story. Many *Belle* artifacts are already displayed at the Bob Bullock Museum, and others will be exhibited in local museums around Matagorda Bay. Meanwhile, THC archeologists are preserving tens of thousands of Fort St. Louis artifacts, including musket balls, gunflints, pottery, coins and many other items used by the colonists.

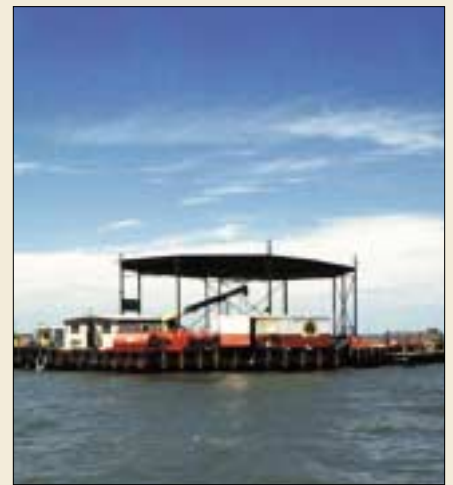
■ Red River War

The goal of the Red River War Battle Sites Project, initiated in 1998, was to identify and document the major battle sites of the Red River War of 1874 in the Texas Panhandle. THC archeologists identified and documented four battle sites. Two of these, the Battle of Lyman's Wagon Train site in Hemphill County and the Battle of Sweetwater Creek site in Wheeler County, are now listed in the National Register of Historic Places.

Another important aim of the Red River War Battle Sites Project is to attract tourists to the Panhandle region. A planning document will be developed that will assist and guide Panhandle area museums in creating accurate and educational displays and programs.

■ Texas Archeology Stewardship Network

When it was created in 1984, the Texas Archeological Stewardship Network was the first such organization in the United States. From an original group of six avocational archeologists, the network has expanded to include 113 men and women who strive to preserve and protect the archeological resources of Texas through their volunteer work with the THC. Examples of the major activities that stewards undertake include: recording new sites, monitoring known sites, seeking protective designations for important sites,



Excavation of the Belle



Kiowa ledger

TEXAS MEMORIAL MUSEUM

recording private collections, carrying out emergency investigations, providing presentations and assisting in cultural resource surveys in their areas. In Fiscal Year 2001–02, stewards logged 12,923 volunteer hours and recorded 218 sites.

■ Texas Archeology Awareness Month

The Archeology Division offers educational opportunities with Texas Archeology Awareness Month (TAAM), an annual observance coordinated by the agency in association with the Council of Texas Archeologists and the Texas Archeological Society. Organizations, institutions and individuals sponsor TAAM events in communities across the state, ranging from lectures on the latest archeological finds to exhibits of early Native American tools to public archeological digs. In 2001–02, approximately 60 communities held TAAM events.



The Historic Texas Lands Plaque recognizes preservation-minded landowners.

■ State Archeological Landmarks (SAL)

The SAL designation helps preserve the state's premier archeological sites. During the past biennium, THC archeologists awarded SAL protection to 163 sites.

■ Historic Texas Lands Plaque

The Historic Texas Lands Plaque program was developed in 2001 to recognize Texas landowners who preserve important archeological sites on their properties. With the support of the Robert E. and Evelyn McKee Foundation of El Paso, preservation-minded landowners receive a special Historic Texas Lands Plaque suitable for outdoor display. Ten plaques were presented to landowners across Texas in the 2001–02 biennium.

ARCHITECTURE

■ Section 106 Reviews

Section 106 of the National Historic Preservation Act of 1966 requires federal agencies to consider what effects their actions, funding, permit or license may have on historic properties, and allow the Advisory Council on Historic Preservation to comment on such actions. The THC's archeology, architecture and history programs divisions conduct Section 106 reviews to assess the degree of potentially damaging effects on historic properties and archeological resources. In the past biennium, THC staff members conducted more than 25,800 Section 106 reviews.

■ Texas Historic Courthouse Preservation Program

In the past three years, the THC has awarded more than \$96 million to 46 courthouses for full and partial restorations, planning and stabilization, and to address emergency situations. Ten courthouses have been restored, with Shackelford County rededicating its building in 2001, and Presidio, Grimes, Sutton, Llano, Milam, Erath, Ellis, Red River and Hopkins counties rededicating historic courthouses in 2002.

■ Texas Preservation Trust Fund

In the past two years, the THC funded more than \$700,000 in matching grants to communities, nonprofit organizations and individuals working to preserve historic homes, buildings and archeological sites.

■ Federal Historic Preservation Tax Incentives

2001 saw the third year of a steady decline in the number of tax credit applications in Texas, but rehabilitation projects rallied in 2002 with a 30 percent increase in submitted applications from the previous year. The THC reviewed 39 completed projects in the last biennium that invested \$120 million in the Texas economy.



The Shackelford County Courthouse, Albany

COMMUNITY ASSISTANCE

■ Texas Main Street Program

In the past biennium, the THC designated Canton, Canyon, Carthage, Comanche, Del Rio, Floresville, Huntsville, Pilot Point and Rio Grande City as Texas Main Street cities. These additions result in more than 80 cities participating in the Texas Main Street Program, one of the strongest in the country. Also during the past biennium, the Texas Main Street Program hosted more than 1,400 attendees at the National Town Meeting on Main Street in Fort Worth.

■ Certified Local Government Program

In the past two years, 27 CLG communities received more than \$200,000 for local preservation projects. During that time, the program also added five participants — Austin, Comal County, Galveston, Rio Grande City and Wichita Falls.

■ Texas Heritage Trails Program

In 2001 and 2002, the Texas Heritage Trails Program added two heritage trail regions — the Texas Lakes Trail Region and the Texas Brazos Trail Region — to the existing Independence, Forts and Forest regions. Currently, the program works with 142 counties.

Last year, the THC developed a brochure highlighting the economic benefits of heritage tourism, which revealed that for every \$1 the state invests in the program, \$23 is returned. The THC received \$4.3 million in Transportation Equity Act for the 21st Century (TEA-21) funding from Texas Department of Transportation in January 2002. Thanks to this funding, the Texas Heritage Trails Program will expand across the state and help even more rural areas develop their heritage tourism resources.

In the past biennium, representatives from other state agencies and organizations involved in tourism met regularly to find new ways to work together to streamline resources. Examples of recent projects include cooperative media tours, *Uniquely Texas*, a video on cultural and heritage tourism, and the Texas Heritage Trails brochures, which highlight cultural and nature tourism attractions as well as historic sites.

The Chisholm Trail brochure was launched August 30, 2002, in Fort Worth. It highlights Texas' ranching heritage and promotes travel heritage sites where visitors can experience the cowboy mystique.

■ Visionaries In Preservation Program

The THC's Visionaries in Preservation Program helps Texans develop an action plan for preserving cultural resources in their hometown or county. During the past biennium, the Visionaries program facilitated grassroots preservation planning and training sessions in nine communities — Castroville, Cuero, Dallas, Galveston, Jefferson, Mineola, New Town Neighborhood (a historic African American neighborhood in Marshall), San Augustine County and Waxahachie. Currently, more than 15 communities are working with THC staff to apply to participate in this unique way of using historic preservation to plan for the future.

■ Regional Workshops

The THC's workshops are held annually in six regions across the state and feature educational programs, expert advice and preservation networking. In the 2001–02 biennium, more than 1,500 Texans attended the events.



R. W. PARSON

Mission San José, one of four San Antonio Spanish missions, is located in the Texas Independence Trail Region.



The Visionaries in Preservation Program helps residents preserve cultural resources.



■ Statewide Plan

In January 2002, preservationists across the state received the THC's *Preserving our Heritage: A Statewide Plan for Texas*. The publication is a user-friendly roadmap for the state's preservation efforts that offers a 10-year planning guide detailing the cultural and historic fabric of the state. The statewide plan clearly defines the challenges facing Texas preservationists and helps them develop a statewide vision. Efforts to implement the plan are already under way in communities throughout Texas.

PUBLIC INFORMATION AND OUTREACH

■ Annual Historic Preservation Conference

The Marketing Communications Division organizes the THC's Annual Historic Preservation Conference for professionals and volunteers interested in historic preservation. The agency has partnered with the Texas Historical Foundation and Preservation Texas to bring innovative ideas and creative solutions to help preservationists achieve their goals. The Annual Historic Preservation Conference offers dynamic keynote speakers and informative seminars and workshops for preservationists across the state. Two successful events were held during the past biennium in Austin and Abilene.

■ Web Site and *Medallion*

The THC also provides preservation news on its web site, www.thc.state.tx.us, and in *The Medallion*, the agency's bimonthly newsletter. Both offer preservationists a way to learn more about issues facing Texas, as well as projects, programs and events associated with the THC. Launched in 1996, the THC's web site receives a steady increase in traffic each year. In the past biennium, during which the site underwent a major redesign, visits averaged more than 500,000 per month. *The Medallion* reaches nearly 10,000 subscribers across the United States six times a year.

■ Publications, Public Relations, Marketing

The Marketing Communications Division supports and promotes the agency's projects, develops outreach programs and increases awareness in the agency's initiatives through marketing, advertising, public relations, special events, and print and electronic communications. The division is also responsible for creating and maintaining a consistent message for the agency.

FRIENDS OF THE TEXAS HISTORICAL COMMISSION

The Friends of the Texas Historical Commission, Inc., a private, nonprofit 501(c)(3) organization, seeks new sources in the private sector and new partners in the corporate world to ensure continued success in Texas preservation. The Friends of the Texas Historical Commission and the THC also sponsor annual Texas Grant Writing Workshops. The seminars address fund-raising issues such as where to find funding, how to approach foundations and how to write convincing proposals. For the past 22 years, workshop instructors have coached participants on effective fund-raising techniques and tips for working with foundations and other non-profit organizations.



This Sixth Texas Calvary battle flag was restored with the help of the Friends of the Texas Historical Commission.



MUSEUM OF FINE ARTS - HOUSTON

CONCLUSION

The Texas Historical Commission (THC) has come a long way since 1953. This report proudly documents the agency's many impressive accomplishments since its inception and during the past biennium.

From identifying and marking important historic sites to developing and maintaining guidelines such as *Preserving our Heritage: A Statewide Plan for Texas*, the THC has effectively overseen Texas preservation issues for five decades. During that time, the agency has also helped communities across the state develop strong ties to their roots through revitalization projects and educational programs.

This report ushers in an exciting year for the THC. In 2003, the agency will hold celebrations throughout the state to commemorate its 50th anniversary and to honor historic preservation in Texas.

The THC will continue to protect and preserve Texas' historic character as long as necessary resources are available. It is the agency's hope and expectation that 50 years from now, Texans will continue to celebrate the THC's successful preservation efforts.



Rededication of the Shackelford County Courthouse, Albany



APPENDICES

TEXAS HISTORICAL COMMISSION MEMBERS

The Texas Historical Commission (THC) consists of 18 members appointed by the governor to serve staggered, six-year terms. The governor appoints the chair.

The board must include:

- one professional archeologist
- one professional historian
- one licensed architect with expertise in historic preservation and architectural history.

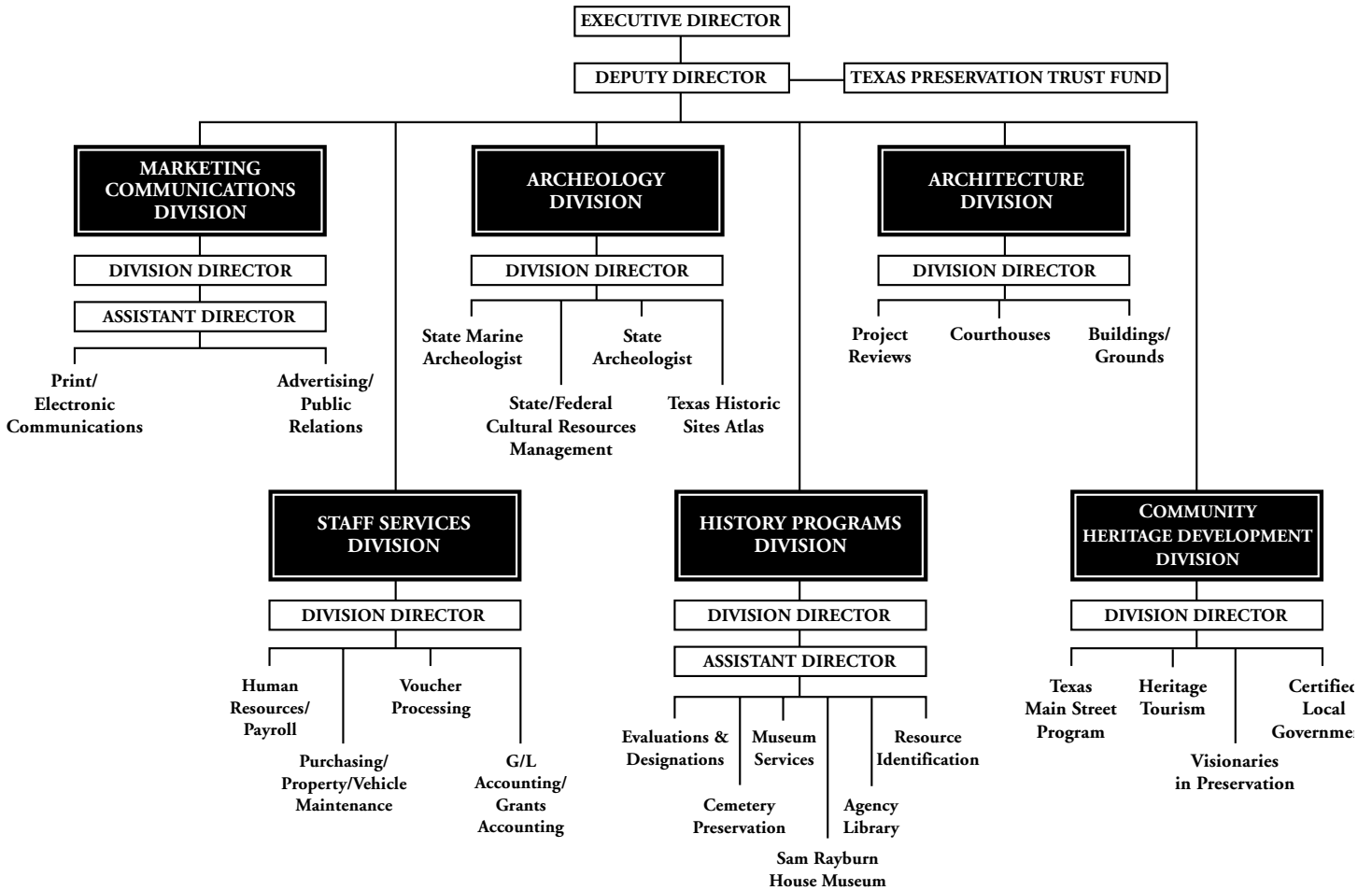
Appointees have a broad knowledge of and commitment to the mission of the agency.

The THC board meets quarterly. THC members for FY2001–02 include:

Commission Member	Residence	Term Expiration (February)
Jean Ann Ables-Flatt	Terrell	2005
Gail Loving Barnes	Odessa	2005
Jane Cook Barnhill	Brenham	2007
J. P. Bryan	Houston	2003
Diane D. Bumpas	Dallas	2005
Shirley Caldwell	Albany	2007
Chris Carson	San Antonio	2003
Lareatha H. Clay	Dallas	2007
T. R. Fehrenbach	San Antonio	Emeritus
Frank Gorman	El Paso	2007
David A. Gravelle	Dallas	2007
Dr. Eileen Johnson	Lubbock	2003
Dr. Mamie McKnight	Dallas	2005
Carl McQueary	Austin	2003
John L. Nau III, Chair	Houston	2005
Juan F. Sandoval	El Paso	2005
Linda Valdez	San Antonio	2003
Clinton White	Wharton	2003
Frank D. Yturria	Brownsville	2007

*Opposite: The Milam County
Courthouse, Cameron*

TEXAS HISTORICAL COMMISSION ORGANIZATIONAL CHART



The THC's executive offices are located in the Carrington-Covert House in Austin.



FINANCIAL REPORT 2000-2001

EXHIBIT II

Combined Statement of Revenues, Expenditures and Changes in Fund Balance:

All Governmental Fund Types, Expendable Trust Funds and Discretely Presented Component Units

For the fiscal year ended August 31, 2001 (Unaudited)

	GOVERNMENTAL FUND TYPES GENERAL* (EXH A-2) (B)	GOVERNMENTAL FUND TYPES SPECIAL REVENUE (EXH B-2) (B)	PRIMARY GOV'T FY2001
REVENUES			
Legislative Appropriations:			
Original Appropriations (d)	27,639,619.00	-	27,639,619.00
Additional Appropriations (e)	742,005.07	-	742,005.07
Taxes	-	-	-
Federal Revenues (f)	989,739.59	-	989,739.59
Federal Grant Pass-Through Revenues (f)	-	-	-
State Grant Pass-Through Revenue (g)	-	-	-
Licenses, Fees and Permits	224,338.17	-	224,338.17
Interest and Other Investment Income	496,790.17	621,063.03	1,117,853.20
Net Increase/Decrease in Fair Value of Investments	-	-	-
Sales of Goods and Services	697,503.88	-	697,503.88
Other Revenues	235,108.52	-	235,108.52
Total Revenues	\$31,025,104.40	\$621,063.03	\$31,646,167.43
EXPENDITURES			
Salaries and Wages	3,268,460.12	297,902.05	3,566,362.17
Payroll Related Costs	750,032.63	23,217.35	773,249.98
Professional Fees and Services	3,209.79	65,567.39	68,777.18
Travel	209,766.09	58,304.20	268,070.29
Materials and Supplies	466,465.29	60,627.16	527,092.45
Communication and Utilities	146,556.31	5,887.12	152,443.43
Repairs and Maintenance	62,355.01	5,676.70	68,031.71
Rentals and Leases	66,328.47	12,171.41	78,499.88
Printing and Reproduction	281,172.09	23,062.36	304,234.45
Intergovernmental Payments	28,417,598.44	-	28,417,598.44
Claims and Judgments	22,642.88	-	22,642.88
Other Operating Expenditures	386,972.12	143,203.14	530,175.26
Public Assistance Payments	429,787.35	242,882.56	672,669.91

- Continued on page 30

FINANCIAL REPORT 2000-2001 (continued)

	GOVERNMENTAL FUND TYPES GENERAL* (EXH A-2) (B)	GOVERNMENTAL FUND TYPES SPECIAL REVENUE (EXH B-2) (B)	PRIMARY GOV'T FY2001
DEBT SERVICE			
Principal	-	-	-
Interest	-	-	-
Other Payments for Refunding	-	-	-
Capital Outlay	243,365.03	21,523.33	264,888.36
Federal Grant Pass-Through Expend. (f)	-	-	-
State Grant Pass-Through Expenditures (g)	-	-	-
Total Expenditures	\$34,754,711.62	\$960,024.77	\$35,714,736.39
EXCESS(DEFICIENCY) OF REVENUES			
Over/Under Expenditures	(3,729,607.22)	(338,961.74)	(4,068,568.96)
OTHER FINANCING SOURCES (USES)			
Operating Transfers In (h)	0.00	0.00	0.00
Operating Transfers Out (h)	0.00	0.00	0.00
Legislative Financing Sources	0.00	0.00	0.00
Legislative Financing Uses	0.00	0.00	0.00
Bond and Note Proceeds	0.00	0.00	0.00
Bond Proceeds for Advance Refunding	0.00	0.00	0.00
Payment to Escrow for Advance Ref.	0.00	0.00	0.00
Increase in Obligations-Capital Leases	0.00	0.00	
Sale of General Fixed Assets	297.22	0.00	297.22
Total Other Financing Sources (Uses)	\$297.22	\$0.00	\$297.22
EXCESS (DEFICIT) OF REVENUES & OTHER FINANCING SOURCES OVER EXPENDITURES & OTHER FINANCING USES			
	(3,729,310.00)	(338,961.74)	(4,068,271.74)
FUND BALANCES - Sept 1, 2000	\$13,472,882.67	\$1,386,361.49	\$14,859,244.16
Restatements			0.00
FUND BALANCES AS RESTATED	\$13,472,882.67	\$1,386,361.49	\$14,859,244.16
Appropriations Lapsed	(1,006,262.21)	0.00	(1,006,262.21)
Net Change in Reserve for Inventories		0.00	0.00
Residual Equity Transfers			
FUND BALANCES - Aug 31, 2001	8,737,310.46	1,047,399.75	9,784,710.21

GRANTS AWARDED

TEXAS HISTORIC COURTHOUSE PRESERVATION PROGRAM

The Texas Historical Commission (THC) received \$50 million from the Texas Legislature to distribute in FY2001. Since 2000, the THC has awarded more than \$96 million in three rounds to 46 counties for historic courthouse restoration projects. Counties and their respective grant amounts for rounds II and III are listed below.

FISCAL YEAR 2001

PLANS AND SPECIFICATIONS

COUNTY	GRANT AMOUNT
Archer	\$120,409
Bee	233,643
Brooks	145,420
Cameron	237,786
Crosby	200,550
Dallas	462,500
Denton	462,137
Dimmit	269,109
Falls	100,334
Goliad	247,500
Harrison	487,500
Hood	344,171
Hudspeth	143,250
Jeff Davis	157,500
Lamar	464,500
Lavaca	37,500
Leon	163,328
Maverick	255,647
Newton	415,533
Nueces	333,401
Parker	371,310
Potter	425,390
Rains	60,375
Val Verde	102,950
Wharton	143,400
Wheeler	243,169
Williamson	243,492

FISCAL YEAR 2002

RESTORATIONS

COUNTY	GRANT AMOUNT
Archer	\$2,805,444
Cameron	3,170,185
Denton	2,700,000
Dimmit	2,430,913
Fayette	3,999,989
Goliad	3,751,784
Harrison	1,000,000
Hudspeth	1,569,847
Jeff Davis	2,266,624
Lamar	3,535,500
Lavaca	938,570
Leon	60,000
Maverick	2,338,057
Montague	144,000
Newton	3,000,000
Nueces	1,900,000
Parker	3,614,800
Rains	180,000
Tyler	150,000
Val Verde	2,500,000
Wharton	1,800,000
Wheeler	3,756,508



Parker County Courthouse, Weatherford

**TEXAS PRESERVATION TRUST FUND GRANT RECIPIENTS
FISCAL YEAR 2001**

COUNTY	2001 PROJECT NAME	GRANT AWARD
Statewide	Texas Archeology Awareness Month	\$2,020
Anderson	Museum for East Texas Culture	10,500
Burnet	Archeological Site 41BT37	6,466
Camp	St. Beulah CME Church	9,503
Dallas	Kovandovitch House	3,943
Dallas	North Tower 17	30,000
DeWitt	St. Michael's Church	21,175
El Paso	Rio Vista Farm Historic District	4,250
Fayette	Cozy Theatre	17,000
Fayette	Fayetteville Precinct 2 Courthouse	19,064
Gonzales	Old Jail Museum (Gonzales Co. Jail)	22,400
Hays	General Edward Burleson Cabin Site	14,960
Hill	Itasca Depot Museum	10,500
Houston	First Christian Church	17,000
Jones	Fort Phantom Hill, 41JS8	10,000
Jones	Swenson Ranch Commissary	19,769
Kendall	Comfort State Bank Building	4,760
Madison	Madison County Museum Building	8,500
Nacogdoches	Durst-Taylor House	10,500
Sabine	Gaines-Oliphant House	19,051
Tarrant	Greater St. James Baptist Church	27,200
Tarrant	The Eddleman-McFarland House	30,000
Taylor	Taylor County Courthouse	14,000
Tom Green	Fort Concho Officer's Quarters #7	30,000
Young	Old Post Office Museum & Art Center	30,000
TOTAL		\$392,561

*Children at a
Texas Archeology Awareness
Month event*



**TEXAS PRESERVATION TRUST FUND GRANT RECIPIENTS
FISCAL YEAR 2002**

COUNTY	2002 PROJECT NAME	GRANT AWARD
Statewide	Texas Beyond History	\$15,000
Anahuac	Fort Anahuac	18,000
Austin	San Felipe State Archeological Site	7,000
Bastrop	Dr. I.B. Nofsinger House	21,000
Bee	Rialto Theater	25,000
Bexar	University of Texas at San Antonio Center for Archaeological Research	10,000
Brazos	Bryan Municipal Building	25,000
Brown	R.F. Hardin High School	10,000
Collin	Old Collin County Courthouse	25,000
Comanche	City Hall of Comanche	8,750
Erath	Bluff Dale Tabernacle	2,450
Fannin	Ladonia Presbyterian Church	15,100
Fayette	Four-Square Barn	20,000
Galveston	Reedy Chapel AME Church	25,000
Grayson	Van Alstyne City Hall	10,188
Gregg	Dean Keener Crim House	1,750
Harris	Houston Municipal Air Terminal	17,500
Jim Wells	McGill Brothers Building	1,875
Kaufman	Robert A. Terrell Home	1,750
Midland	George Bush Family Home	4,000
Presidio	Chinati Hot Springs	5,000
Red River	Smathers-DeMorse House	5,171
Schleicher	West Texas Woolen Mills	4,019
Starr	Lee House at Fort Ringgold	5,000
Tarrant	Fort Worth Stockyard	13,698
Van Zandt	Van Zandt County Courthouse	5,000
Victoria	McNamara-O'Connor House	12,499
Walker	Forrest Lodge No. 19 A.F. & A.M.	5,250
Webb	Montemayor House	17,500
Wichita	Tom L. Burnett Home	25,000
Williamson	Old Taylor City Hall of 1935	17,500
TOTAL		\$380,000

**CERTIFIED LOCAL GOVERNMENT GRANT RECIPIENTS
FISCAL YEAR 2001**

CLG COMMUNITY	PROJECT	AMOUNT
Abilene	Preservation training	\$500
Arlington	Preservation training	1,000
Beaumont	Preservation training	500
Brownsville	National Register nominations	9,500
Bryan	Preservation training	1,000
Denton	Conservation districts and preservation training	4,038
El Paso	Historic resources surveys	10,500
Ennis	Preservation training	500
Fort Worth	Preservation training	1,000
Georgetown	Regional seminar and preservation training	2,500
Granbury	Preservation plan	10,500
Grapevine	Strategic planning workshop and preservation training	5,300
Hays County	Preservation plan and National Register nominations	8,550
Lubbock	Educational brochure and preservation training	3,215
Mansfield	National Register nominations and preservation training	4,500
Matagorda County	Historic resources survey	4,200
Mineola	Preservation plan	5,500
Palestine	Preservation plan	7,465
San Antonio	Design guidelines booklet	1,800
Socorro	Lime plaster workshop	5,000
Tyler	Historic resources survey	10,772
TOTAL		\$97,840

*Tarrant County
Courthouse, Fort Worth*



FT. WORTH CVB

**CERTIFIED LOCAL GOVERNMENT GRANT RECIPIENTS
FISCAL YEAR 2002**

CLG COMMUNITY	PROJECT	AMOUNT
Abilene	Preservation training	\$780
Arlington	Preservation plan and preservation training	5,000
Atascosa County	Preservation training	1,500
Beaumont	Preservation training	900
Brownsville	Public education brochures and preservation training	6,250
Castroville	Preservation training	1,380
Corpus Christi	Historical video	15,000
Dallas	Preservation training	2,000
Denton	Preservation guidebook and brochure	4,210
Fort Worth	Inventory of historic schools	2,100
Galveston	Preservation plan and training	14,654.07
Granbury	Host conference and training	14,446
Grapevine	Preservation training	2,000
Hays County	Preservation plan and National Register nominations	7,320
Nacogdoches	Downtown brochure and preservation training	1,625
Palestine	National Register nominations and preservation training	9,505.80
Round Rock	Preservation plan	5,000
San Augustine County	Historic resources survey	6,961
Tyler	Historic resources survey	9,786
TOTAL		\$110,417.87



Dickens on the Strand festival, Galveston

**HERITAGE TOURISM PARTNERSHIP GRANT RECIPIENTS
2001–2002**

**Texas Independence Trail Region Heritage Tourism Advertising Grants
Fiscal Year 2001**

RECIPIENT	PROJECT	AMOUNT
Cuero Chamber	Roads, Trails & Rails Brochure	\$1,500
Port Lavaca/ Calhoun County Chamber	Indianola Trail Visitors Guide	1,500
Stephen F. Austin State Park Association	Outdoor Billboard	1,500
Star of the Republic Museum	Advertising in Bryan-College Station Visitor Guide	1,500
TOTAL		\$6,000

**Texas Forts Trail Region Heritage Tourism Partnership Grants
Fiscal Year 2001**

RECIPIENT	PROJECT	AMOUNT
Breckenridge Improvement Council	Heritage Event	\$2,000
City of Breckenridge	Outdoor Signage	4,628
Fort Chadbourne Foundation	Promotional Video	5,000
Friends of the Cross Plains Library	Library Wall Mural	3,500
Grady McWhiney Research Foundation	Promotional Publication	5,000
The Grace Museum	Promotional Video	4,500
Heart of Texas Historical Museum	Promotional Brochure	300
Young County	Heritage Event	5,000
TOTAL		\$29,928



Grace Museum, Abilene

HERITAGE TOURISM PARTNERSHIP GRANT RECIPIENTS 2001–2002 (continued)

**Texas Independence Trail Region Heritage Tourism Partnership Grants
Fiscal Year 2001**

RECIPIENT	PROJECT	AMOUNT
Chambers County	Visitor Information Packet/Signage	\$2,200
Cuero Heritage Foundation, Inc.	Interpretative Museum Exhibit	5,000
Fort Bend Museum Association	Publication/Web site	5,000
Galveston County Historical Commission	Heritage Workshops/Training	4,300
Goliad Heritage Council	Heritage Event	5,000
Goliad State Historical Site	Heritage Event	5,000
Matagorda County Historical Commission	Promotional Signage	3,500
TOTAL		\$30,000

**Texas Forest Trail Region Heritage Tourism Partnership Grants
Fiscal Year 2002**

RECIPIENT	PROJECT	AMOUNT
City of Mt.Vernon	Promotional Brochure	\$5,000
Deep East Texas Foundation	Promotional Brochure	5,000
Gilmer Area Chamber	Promotional Brochure/Web site	4,584
Kilgore Chamber	Outdoor Signage	4,923
San Augustine County Historical Foundation	Outdoor Signage	5,000
SFA State University Arthur Temple College of Forestry	Promotional Publication	5,000
TOTAL		\$29,507



Moody Mansion, Galveston

THC MUSEUM GRANT RECIPIENTS 2001–2002

Fiscal Year 2001

COUNTY	MUSEUM
Gillespie	Admiral Nimitz State Historic Site–National Museum of the Pacific War
Crosby	Crosby County Pioneer Memorial Museum
El Paso	El Paso Museum of History
Hidalgo	Hidalgo County Historical Museum
Upshur	Historic Upshur Museum
Kleberg	John E. Conner Museum
Presidio	Marfa-Presidio County Museum
Jefferson	Museum of the Gulf Coast
Goliad	Presidio La Bahía
Ector	The Presidential Museum
Aransas	Texas Maritime Museum



TXDOT

*Admiral Nimitz State Historic Site,
Fredericksburg*

Fiscal Year 2002

COUNTY	MUSEUM
Travis	Austin History Center
Brazoria	Brazoria County Historical Museum
Carson	Carson County Square House Museum
Crosby	Crosby County Pioneer Memorial Museum
El Paso	El Paso Museum of History
Hale	Hale County Farm and Ranch Museum, Hale Center
Orange	Heritage History Museum of Orange County
Wheeler	Mobeetie Jail Museum
Harris	Museum of Printing History
Hemphill	River Valley Pioneer Museum
Swisher	Swisher County Museum
Bowie	Texarkana Museums System
Galveston	Texas Aviation Hall of Fame Museum



TXDOT

Presidio La Bahía, Goliad

HISTORICAL DESIGNATIONS

The following list includes new historical designations approved by the Texas Historical Commission and related boards. The designations are categorized by county. The listings include:

- National Register of Historic Places
- Recorded Texas Historic Landmarks
- Official Texas Historical Markers
- State Archeological Landmarks
- Historic Texas Cemeteries

ANDERSON

Official Texas Historical Marker
First Baptist Church of Palestine
Mary Kate Hunter
Site of Lincoln High School
Micham Main
Palestine Post Office and Federal Building
Tennessee Colony Order of the Eastern Star No.102
Tyre Masonic Lodge No.198
Site of Woodhouse School

ANDREWS

State Archeological Landmark
Sites 41AD13, 41AD15 and 41AD43

ANGELINA

Official Texas Historical Marker
Angelina & Neches River Railroad
Central Consolidated School
W. C. Trout and the Counter-Balanced Pumping Unit
Whitehouse Cemetery
State Archeological Landmark
Four sites in Kit McConnico Park
Historic Texas Cemetery
McCarty Cemetery

ARANSAS

Official Texas Historical Marker
Aransas County Airport

ARCHER

Official Texas Historical Marker
West Fork School
Historic Texas Cemetery
Lake Creek Cemetery

ARMSTRONG

State Archeological Landmark
Site 41AM2 in Palo Duro State Park

ATASCOSA

National Register of Historic Places
Frederick and Sallie Lyons House
Official Texas Historical Marker
Pleasanton City Cemetery

AUSTIN

Recorded Texas Historic Landmark
Preibisch Building
Official Texas Historical Marker
Liedertafel
Original Site of St. Mary's Episcopal Church
Historic Texas Cemetery
Alexander Glenn Family Graveyard
Buckhorn Cemetery
Oak Knoll Cemetery
San Felipe Cemetery

BAILEY

Historic Texas Cemetery
Maple Cemetery

BASTROP

Recorded Texas Historic Landmark
Rabb House
Official Texas Historical Marker
First Baptist Church of Bastrop
State Archeological Landmark
Site 41BP88
Historic Texas Cemetery
Baylor Family Cemetery

BAYLOR

Official Texas Historical Marker
Site of Westover
Westover School

BEE

National Register of Historic Places
Bee County Courthouse
Rialto Theater
Recorded Texas Historic Landmark
Bee County Courthouse
State Archeological Landmark
Sites 41BE8, 41BE9 and 41BE10 in Northwest Area Park (Veterans Memorial Park)
Bee County Courthouse
Historic Texas Cemetery
Colony Cemetery

BELL

Recorded Texas Historic Landmark
Bell County Courthouse
Official Texas Historical Marker
The Rev. James E. and Fannie F. Ferguson
Gulf, Colorado and Santa Fe Railway
Planing Mill
Dr. Samuel J. and Charlotte H. Jones
Nolanville Encampment
Site of Pecan School
Post Oak Cemetery
Stampede Creek
Historic Texas Cemetery
Old Salado Graveyard

BEXAR

National Register of Historic Places
Brooke Army Medical Center
Ethel Wilson Harris House
Old San Antonio City Cemeteries
Historic District
San Antonio U.S. Post Office and Courthouse
United States San Antonio Arsenal District
Official Texas Historical Marker
Site of Geier and Schmid Farm
Site of the Home of Dr. Ferdinand Ludwig Herff
Kelly Air Force Base
San Antonio Section, National Council of Jewish Women
Stinson Airport
Historic Texas Cemetery
Bueche Cemetery
Heirs of Georg Heinrich Buchsenschutz Family Cemetery
Oak Island Cemetery

BLANCO

Historic Texas Cemetery
Johnson City Masonic Cemetery

BOSQUE

Official Texas Historical Marker
Oswald Cemetery
Norse
Historic Texas Cemetery
Scrutchfield Cemetery

BOWIE

National Register of Historic Places
Garland Community School Teacherage

BRAZORIA

Official Texas Historical Marker
Angleton Independent School District
Site of Crosby's Landing
Quintana Cemetery
Historic Texas Cemetery
Hudgins Cemetery

BRAZOS

National Register of Historic Places
Bryan Municipal Building
Recorded Texas Historical Landmark
La Salle Hotel
Official Texas Historical Marker
Wellborn Cemetery
William Templeton Millican

BREWSTER

State Archeological Landmark
Six sites at the Candelilla Camp

BROOKS

Official Texas Historical Marker
Falfurrias to Encino Road

BROWN

Official Texas Historical Marker
The Rev. Noah Turner Byars
May United Methodist Church

The Rev. Dr. John David Robnett
Rocky Creek Baptist Church
Thrifty
Historic Texas Cemetery
Bangs Cemetery
Eureka Cemetery
Lost Creek Cemetery

BURLESON

National Register of Historic Places
Thomas Jr. and Mary Kraitchar House
Recorded Texas Historical Landmark
Porter House
Duewall House
Official Texas Historical Marker
Caldwell Masonic Cemetery
John Mitchell
Historic Texas Cemetery
Caldwell Masonic Cemetery

BURNET

National Register of Historic Places
Burnet County Courthouse
State Archeological Landmark
Site 41BT37

CALDWELL

Historic Texas Cemetery
Fentress Community Cemetery
Gunkel Family Cemetery
Lane Cemetery

CALHOUN

Official Texas Historical Marker
Calhoun County Hurricanes
Our Lady of the Gulf Catholic Church
Port O'Connor
Salem Lutheran Church
Historic Texas Cemetery
Seadrift Cemetery

CAMERON

Recorded Texas Historical Landmark
Howard E. and Mary Butt House
Russell-Cocke House
Sacred Heart Catholic Church
Official Texas Historical Marker
All Saints' Episcopal Church
Brownsville-Matamoros Ferries & River Boardwalk
Historic Texas Cemetery
Champion Cemetery
El Calaboz Cemetery
Los Alamos Cemetery at Galveston Ranch
Palm in Field Cemetery
San Pedro at Rancho Viejo Cemetery
Zepeda Cemetery

CARSON

Official Texas Historical Marker
Texan Hotel

CASS

Official Texas Historical Marker
Bessie Coleman
Civilian Conservation Corps at Linden
Corinth Cemetery



Historic Texas Cemetery

Avinger Cemetery
Laws Chapel Cemetery
Pine Crest Cemetery

CHAMBERS

Official Texas Historical Marker
Henry and Amelia Griffith

CHEROKEE

National Register of Historic Places
James I. and Myrta Perkins House
Official Texas Historical Marker
Chief Samuel Bengé
Chief Bowles' Last Homesite
Corinth Baptist Church
Falvey Memorial United Methodist Church
Morrill Orchard Company
Old Palestine Cemetery
Pine Grove School
The Rusk Cherokeean
Nan Travis Memorial Hospital
Sardis Baptist Church
David Greene Templeton
Site of Wildhurst
Historic Texas Cemetery
Grimes Cemetery
Thompson Cemetery

CLAY

Historic Texas Cemetery
Cambridge Cemetery

COCHRAN

Historic Texas Cemetery
Morton Memorial Cemetery

COLEMAN

Historic Texas Cemetery
Silver Valley Cemetery

COLLIN

Official Texas Historical Marker
Site of Lebanon
State Archeological Landmark
Site 41COL196
Historic Texas Cemetery
Baccus Cemetery
Bethany Cemetery
Black Cemetery
Collingsworth Cemetery
Leach-Thomas Cemetery
Maxwell Cemetery
Old City Cemetery
Stony Point Cemetery

COLLINGSWORTH

Historic Texas Cemetery
Fairview Cemetery

COLORADO

Recorded Texas Historic Landmark
Dick-Gillette House
Official Texas Historical Marker
Columbus Odd Fellows Rest Cemetery
William Demetris Lacey
Stage Lines Through Columbus

COMAL

Recorded Texas Historic Landmark
Faust Street Bridge
Fischer House
Sattler Post Office
Official Texas Historical Marker
Adam Becker Homestead
Fischer Homestead
Sattler
Historic Texas Cemetery
Moegelin Cemetery
Sattler Family Cemetery
Schlather Cemetery
Heinrich Voges Cemetery
Wilhelm Weidner Cemetery

COMANCHE

Official Texas Historical Marker
The Comanche National Bank
Nineveh Cemetery
Taylor's Chapel (Concord) Cemetery

CONCHO

Official Texas Historical Marker
Eden Church of Christ
Eden United Methodist Church
First Baptist Church of Eden
Pioneers Rest Cemetery
State Archeological Landmark
Margaret Loveless Site 41CC298

COOKE

Recorded Texas Historic Landmark
Nelson Log House
Official Texas Historical Marker
Cooke County Free Library
Gainesville Junior College
Gainesville National Bank
James Menees Lindsay
Nelson Grove Cemetery
W.T.G. Weaver

CORYELL

Official Texas Historical Marker
Bethel Heights Baptist Church
Pidcoke Cemetery
Historic Texas Cemetery
Ater Cemetery
King Cemetery
Pearl Cemetery
Warren-Miller Cemetery

CROCKETT

State Archeological Landmark
55 Block 12 University of Texas Lands
Archeological sites

CROSBY

Recorded Texas Historic Landmark
Crosby County Courthouse
Historic Texas Cemetery
Rock House Cemetery

CULBERSON

State Archeological Landmark
Sites 41CU638 and 41CU639

DALLAS

National Register of Historic Places
Goodyear Tire & Rubber Company and
B.F. Goodrich Building
Lincoln Paint and Color Company Building
Medical Dental Building
Strain Farm
Turtle Creek Pump Station
Recorded Texas Historic Landmark
Marcus House
Robert and Marie Stubbs House
Official Texas Historical Marker
Original Site of Coca-Cola Bottling
Company of Dallas
Cox Cemetery
Public Education in Garland
Shelton's Bear Creek Cemetery
Trees Cemetery
Historic Texas Cemetery
Brickyard Cemetery
Marsh Cemetery
Mesquite Cemetery

DENTON

National Register of Historic Places
Denton Courthouse Square
Historic District
Official Texas Historical Marker
Green Valley Schools
Lane Chapel C.M.E. Church
Old Alton Cemetery
Smith Cemetery
Swisher Cemetery
Historic Texas Cemetery
I.O.O.F. Cemetery
Oakwood Cemetery
Old Alton Cemetery
Ritter Cemetery
Taylor Family Cemetery

DEWITT

Recorded Texas Historic Landmark
Holy Cross Catholic Church
Historic Texas Cemetery
Concrete Cemetery
Holy Cross Catholic Cemetery
St. John Evangelical Lutheran Cemetery
Upper Yorktown Cemetery

DICKENS

Official Texas Historical Marker
Marshall Clinton Formby, Jr.
Historic Texas Cemetery
Red Mud Cemetery

DIMMIT

Recorded Texas Historic Landmark
Dimmit County Courthouse

DONLEY

Official Texas Historical Marker
Jericho Cemetery
Rowe Cemetery
Historic Texas Cemetery
Jericho Cemetery

EASTLAND

Historic Texas Cemetery
Liberty Cemetery

EDWARDS

Official Texas Historical Marker
Clinton Lafayette Smith
State Archeological Landmark
13 sites in Devil's Sinkhole State
Natural Area

ELLIS

Official Texas Historical Marker
Boren Cemetery
Bessie Coleman
Maypearl Cemetery
Moore House
Shiloh Cemetery
Historic Texas Cemetery
Ellis County Farm Cemetery

EL PASO

National Register of Historic Places
El Paso U.S. Courthouse
Official Texas Historical Marker
Early El Paso Water Systems
Henry O. Flipper
Granja Rio Vista
Rio Vista Farm
State Archeological Landmark
Keystone Dam Site

ERATH

Official Texas Historical Marker
Bowman Ridge Cemetery
Caudle Cemetery
Hancock Cemetery
Historic Texas Cemetery
Pony Creek Cemetery
Purves Live Oak Cemetery
Stramler Family Cemetery

FALLS

National Register of Historic Places
Falls County Courthouse
Official Texas Historical Marker
Site of St. Paul School
Salem Lutheran Church
State Archeological Landmark
Falls County Courthouse
Historic Texas Cemetery
Criswell Cemetery
Powell-Tull Cemetery

FANNIN

National Register of Historic Places
Lake Fannin Organizational Camp
Recorded Texas Historic Landmark
Bonham High School Auditorium
and Gymnasium
Official Texas Historical Marker
John P. Simpson
Historic Texas Cemetery
Allens Chapel Cemetery
Coontown Cemetery



FAYETTE

National Register of Historic Places
Fayette County Courthouse Square
Historic District

Recorded Texas Historic Landmark

Fayette County Courthouse
Ludwig and Caroline Giese House
Official Texas Historical Marker
William B. Bridgers
Plum Grove Baptist Church and Cemetery
Kreische Complex
Monument Hill Tomb
Historic Texas Cemetery
Black Jack Springs Cemetery
Brandt Cemetery
Halamiczek Cemetery
Pin Oak Cemetery
Woods Prairie Cemetery

FISHER

Official Texas Historical Marker
First United Methodist Church of Roby
State Archeological Landmark
Adair-Steadman Site 41FS2

FLOYD

Official Texas Historical Marker
Coronado in Blanco Canyon
State Archeological Landmark
Site 41FL76 within Caprock Canyon
Trailway Park

FOARD

Recorded Texas Historic Landmark
Foard County Courthouse

FORT BEND

National Register of Historic Places
John M. and Lottie O. Moore House
Historic Texas Cemetery
Rosenberg Cemetery

FRANKLIN

Historic Texas Cemetery
Good Hope Cemetery

FREESTONE

Official Texas Historical Marker
Grange Hall Community
Historic Texas Cemetery
Salem Cemetery

GALVESTON

National Register of Historic Places
Denver Court Historic District
Galveston U.S. Post Office, Custom House
and Courthouse
Recorded Texas Historic Landmark
Boddeker House
Official Texas Historical Marker
Site of Clifton-by-the-Sea
Faith United Methodist Church
Galilee Missionary Baptist Church
San Leon
Historic Texas Cemetery
San Leon Cemetery

GARZA

National Register of Historic Places
Garza County Courthouse
Recorded Texas Historic Landmark
Garza County Courthouse

GILLESPIE

Recorded Texas Historic Landmark
Wahrmond-Priess House
Official Texas Historical Marker
Squaw Creek Primitive Baptist Church
Historic Texas Cemetery
Stonewall Community Cemetery
Trinity Cemetery

GOLIAD

National Register of Historic Places
Goliad State Park Historic District
Official Texas Historical Marker
Manuel Becerra
Historic Texas Cemetery
Peck Cemetery

GONZALES

Official Texas Historical Marker
The Presbyterian Church of Gonzales
Historic Texas Cemetery
Green DeWitt Cemetery
Gates Cemetery
Masonic Cemetery
Odd Fellows Cemetery
Ottine Cemetery
Pilgrim Cemetery

GRAY

Official Texas Historical Marker
Woody Guthrie

GRAYSON

National Register of Historic Places
Sherman U.S. Post Office and Courthouse
Recorded Texas Historic Landmark
Samuel E. and Mary C. Marshall House
St. Mary's Catholic Church
Official Texas Historical Marker
Antioch Baptist Church
Carpenters Bluff Bridge
Courthouses of Grayson County
Mita Holsapple Hall
Jesse P. Loving
Mattie Davis Lucas
Tom Randolph
Mame Roberts
Sherman Little Theater
(The Sherman Community Players)

GREGG

Recorded Texas Historic Landmark
Longview Municipal Building and
Central Fire Station
Historic Texas Cemetery
Hunter Cemetery

GRIMES

Recorded Texas Historic Landmark
St. Mary's Catholic Church

GUADALUPE

Recorded Texas Historic Landmark
Sweet Home Vocational and Agricultural
High School
Official Texas Historical Marker
Site of Muelder Store
Historic Texas Cemetery
Jauer Family Cemetery
Warncke Cemetery

HALE

National Register of Historic Places
Plainview Commercial Historic District
(Period of significance change)

HAMILTON

Historic Texas Cemetery
Ireland Cemetery
Stanley Cemetery

HARDEMAN

Recorded Texas Historic Landmark
Hardeaman County Courthouse
Simpson Building
Historic Texas Cemetery
Goodlett Cemetery

HARDIN

Official Texas Historical Marker
Felps Cemetery

HARRIS

National Register of Historic Places
Boulevard Oaks Historic District
Sam Houston Hotel
Houston Post-Dispatch Building
Link-Lee House
McKee Street Bridge
Simon and Mamie Minchen House
Union Transfer and Storage Building
Recorded Texas Historic Landmark
Anderson House
Benjamin Apartments
Sessums and Virginia Cleveland House
Harper House
Houston Heights City Hall and Fire Station
Link-Lee House
Minchen House
Third Church of Christ, Scientist
Official Texas Historical Marker
Barker Post Office
The Blue Bird Circle
First Baptist Church of Houston
Grace United Methodist Church
Harrisburg-Jackson Cemetery
Eugene Thomas Heiner
Jordan Grove Missionary Baptist Church
Belle Sherman Kendall
McDougle Cemetery
Pilot Cemetery
Spring Cemetery
Catherine Wunderlich
State Archeological Landmark
Site 41HR751
Historic Texas Cemetery
Magnolia Cemetery
McDougle Family Cemetery

HARRISON

National Register of Historic Places
Marshall U. S. Post Office
Recorded Texas Historic Landmark
Todd-McKay-Wheat House
Official Texas Historical Marker
Kahn Memorial Hospital
Historic Texas Cemetery
Liberty Cemetery

HAYS

National Register of Historic Places
Bunton Branch Bridge
Kyle City Hall
Winters-Wimberley House
Recorded Texas Historic Landmark
Cumberland Presbyterian Church
Historic Texas Cemetery
Butler Cemetery
Wallace Family Cemetery

HEMPHILL

National Register of Historic Places
Battle of Lyman's Wagon Train

HENDERSON

Official Texas Historical Marker
Cottonwood Cemetery
Historic Texas Cemetery
Athens Cemetery
Rome Cemetery
Walnut Creek Cemetery

HIDALGO

National Register of Historic Places
Cine El Rey
Official Texas Historical Marker
Floyd H. (Slats) Rodgers
1940 Train-Truck Collision

HILL

Historic Texas Cemetery
Blum Cemetery
Derden Cemetery

HOOD

Recorded Texas Historic Landmark
W. D. and Essie Gafford House
Official Texas Historical Marker
The Colony Cemetery
Martin Cemetery
James Hogan and Mary Kate
Stringfellow Doyle

HOUSTON

Recorded Texas Historic Landmark
Houston County Courthouse
Official Texas Historical Marker
Bethel Missionary Baptist Church
Bynum Cemetery
Cedar Branch Community School
Lula Demby Dailey
Denson Homesite and Cemetery
John Edens Cemetery
Holly Cemetery
Old Zion Cemetery
Post Oak School

Read's Opening
Rockland Cemetery, Church and School
Historic Texas Cemetery
Refuge Cemetery

HOWARD

Official Texas Historical Marker
Big Spring School District

HUNT

National Register of Historic Places
President's House, Commerce A&M
Official Texas Historical Marker
Ende-Gaillard House
Greenville
I.O.O.F. Cemetery

HUTCHINSON

Official Texas Historical Marker
Spring Creek School

JACK

Historic Texas Cemetery
Truce Cemetery

JACKSON

Historic Texas Cemetery
Flournoy Cemetery
Anthony Butler McDowell Cemetery
McHenry Family Cemetery

JASPER

National Register of Historic Places
Aldridge Sawmill, Angelina National Forest

JEFF DAVIS

National Register of Historic Places
Jeff Davis County Courthouse
Recorded Texas Historic Landmark
Jeff Davis County Courthouse

JEFFERSON

Official Texas Historical Marker
1886 Hurricane at Sabine Pass
John Warne Gates
Port Arthur-Beaumont Interurban Railway
The Port Arthur Refinery
Texas Company Refinery at Port Arthur
(Port Arthur Works)
Francis John (Frank) Trost
Historic Texas Cemetery
Evergreen Cemetery

JIM WELLS

Official Texas Historical Marker
First Baptist Church of Alice
Historic Texas Cemetery
Las Calaveras Cemetery
San Diego City Cemetery

JOHNSON

Official Texas Historical Marker
First Baptist Church of Cleburne
Site of Norman Springs and Norman Grove

Historic Texas Cemetery

Baker-Lain Cemetery
Bethany Rest Cemetery

JONES

Recorded Texas Historic Landmark
Jones County Courthouse
Official Texas Historical Marker
Compere Cemetery
Hamlin
Site of Truby School

KARNES

Official Texas Historical Marker
Nativity of the Blessed Virgin Mary
Catholic Cemetery
Nativity of the Blessed Virgin Mary
Catholic Church
Historic Texas Cemetery
Elim Lutheran Church Cemetery

KAUFMAN

Official Texas Historical Marker
Kemp
Historic Texas Cemetery
Cedar Grove Cemetery
Kaufman County Indigent Cemetery

KENDALL

Recorded Texas Historic Landmark
Welfare School
Official Texas Historical Marker
Hermann and Antoine
Ingenhuett Homestead
Staffel Family and The Staffel Store
Historic Texas Cemetery
Boerne Cemetery

KERR

National Register of Historic Places
Woolfs Building
Recorded Texas Historic Landmark
Woolfs Building
Official Texas Historical Marker
James Kerr
Zion Lutheran Church

KIMBLE

Official Texas Historical Marker
Cloud Point

KINNEY

Recorded Texas Historic Landmark
Filippone Building

LAMAR

Recorded Texas Historic Landmark
Lamar County Courthouse
Historic Texas Cemetery
Mt. Pleasant Cemetery

LAMPASAS

National Register of Historic Places
Lampasas Colored School
Historic Texas Cemetery
Long Cove Cemetery
Stanley Chapel Cemetery

LAVACA

Official Texas Historical Marker
Site of Beasley School
First National Bank of Shiner
John Himes Livergood
Hope Baptist Church
Shiner Brethren Church
Historic Texas Cemetery
New County Farm – Willing Workers
Black Cemetery
New Poor Farm Cemetery
Old County Farm – Willing Workers
Black Cemetery
Shiner Brethren Cemetery

LEE

Historic Texas Cemetery
Adina Cemetery

LEON

Recorded Texas Historic Landmark
James and Julia Anderson House
Historic Texas Cemetery
Brushy Cemetery
Friendship Cemetery
Official Texas Historical Marker
Tubb Cemetery

LIBERTY

Official Texas Historical Marker
Price Daniel

LIMESTONE

Official Texas Historical Marker
Tehuacana Cemetery
Tidwell (Steele Creek) Cemetery
and Community
Shiloh Baptist Church
Historic Texas Cemetery
Cobb Cemetery
Delia Cemetery
Hogan Cemetery
Personville Cemetery

LIPSCOMB

Recorded Texas Historic Landmark
Lipscomb County Courthouse

LLANO

Official Texas Historical Marker
Castell School
First Christian Church of Llano
Site of Prairie Mountain School
Trinity United Methodist Cemetery
State Archeological Landmark
Dave Schaefer Site 41LL2
Granite Beach Site 41LL423
Historic Texas Cemetery
Bluffton Cemetery
St. John Lutheran Church Cemetery
Sandy Mountain Cemetery
Tow Cemetery

LOVING

State Archeological Landmark
Site 41LV11

LUBBOCK

Recorded Texas Historic Landmark
Isham and Texana Tubbs House
Historic Texas Cemetery
City of Lubbock Cemetery

MADISON

Official Texas Historical Marker
Site of Bullard Community
Midway Church of Christ
Park Cemetery

MARTIN

Recorded Texas Historic Landmark
Carmelite Monastery

MASON

Recorded Texas Historic Landmark
Holmes & Bierschwale Law and
Land Office
Historic Texas Cemetery
Wagram Cemetery

MATAGORDA

Recorded Texas Historic Landmark
R. J. Hill Building
Official Texas Historical Marker
First Christian Church of Bay City
Clemville
Site of Hilliard High School
Historic Texas Cemetery
Collegeport Cemetery

McCULLOCH

Historic Texas Cemetery
Cowboy Cemetery

McLENNAN

Official Texas Historical Marker
Samuel Johan Forsgard
First United Methodist Church of Hewitt
William McKendree Lambdin
Speepleville Baptist Church
West Brethren Church
Historic Texas Cemetery
Crawford Cemetery
Evergreen Cemetery

McMULLEN

Official Texas Historical Marker
John Swanson Yarbrough

MEDINA

Recorded Texas Historic Landmark
J. M. Koch's Hotel
Yancey United Methodist Church
Official Texas Historical Marker
Zion Evangelical Lutheran Church
Historic Texas Cemetery
Tomerlin Cemetery

MILAM

Official Texas Historical Marker
Lilac Cemetery
Site of Mundine Hotel
New Providence Primitive Baptist Church

Railroads in Rockdale
Sharp Cemetery
Urban Cemetery
Historic Texas Cemetery
Friendship United Methodist Church
Cemetery
Hope Lutheran Memorial Park

MILLS

National Register of Historic Places
Mills County Courthouse
Official Texas Historical Marker
Democrat Cemetery
Site of Chesser Valley Community
State Archeological Landmark
Mills County Courthouse and Jail

MONTGOMERY

Recorded Texas Historic Landmark
Thomas Chapel United Methodist Church
Official Texas Historical Marker
Conroe Telephone Exchange
Historic Texas Cemetery
Magnolia Cemetery
Oklahoma Cemetery

MORRIS

Official Texas Historical Marker
Site of Valley View School

NACOGDOCHES

Historic Texas Cemetery
Linn Flat Cemetery

NAVARRO

Official Texas Historical Marker
Site of Tuckertown

NEWTON

Recorded Texas Historic Landmark
Stringtown Schoolhouse
Official Texas Historical Marker
Pine Grove Missionary Baptist Church
Woods Cemetery
Historic Texas Cemetery
Farrsville Cemetery
Garlington Cemetery
Sycamore Cemetery
Wilson Chapel Cemetery

NUECES

Official Texas Historical Marker
Mt. Zion Missionary Baptist Church
State Archeological Landmark
Two sites in Mustang Island State Park
1915/1931 Nueces County Courthouse
Old Bayview Cemetery
Historic Texas Cemetery
Old Bayview Cemetery

ORANGE

Official Texas Historical Marker
St. Therese Catholic Church

PALO PINTO

Recorded Texas Historic Landmark
Mineral Wells High School

Robinson School
Thomas House
State Archeological Landmark
Site 41PP348 in Possum Kingdom
State Park

PANOLA

Official Texas Historical Marker
Central Baptist Church

PARKER

Official Texas Historical Marker
Baker Community

PECOS

Official Texas Historical Marker
O.W. Williams

POLK

National Register of Historic Places
Polk County Courthouse and 1905
Courthouse Annex
Official Texas Historical Marker
Site of Smithfield
Recorded Texas Historic Landmark
Polk County Courthouse
State Archeological Landmark
Polk County Courthouse
1905 Polk County Annex
Historic Texas Cemetery
R. A. McCaghren Cemetery
West Tempe Cemetery

POTTER

National Register of Historic Places
Amarillo U.S. Post Office and Courthouse

PRESIDIO

Official Texas Historical Marker
William Edward Russell
State Archeological Landmark
10 anonymous sites
San Esteban Rock Shelter Site 41PS20
San Antonio de Padua Site 41PS58

REAL

Historic Texas Cemetery
Clark Family Cemetery

RED RIVER

Official Texas Historical Marker
J. D. Tippit
Historic Texas Cemetery
New Shamrock Cemetery
Old Shamrock Cemetery

REFUGIO

National Register of Historic Places
Refugio County Courthouse

ROBERTS

Recorded Texas Historic Landmark
Roberts County Courthouse
Official Texas Historical Marker
Cottage Hotel

ROCKWALL

Historic Texas Cemetery
Blackland Cemetery
Nathan Butler Cemetery

ROBERTSON

Recorded Texas Historic Landmark
St. Paul United Methodist Church

RUSK

Official Texas Historical Marker
Hunt Cemetery
Historic Texas Cemetery
Baysinger Cemetery
Buckner Cemetery

SAN AUGUSTINE

Recorded Texas Historic Landmark
San Augustine County Courthouse
Official Texas Historical Marker
Bobbitt Family Cemetery
Little Flock Cemetery
Price-Sossaman-Slaughter Cemetery
Historic Texas Cemetery
Bobbitt Family Cemetery
Little Flock Cemetery

SAN JACINTO

Recorded Texas Historic Landmark
San Jacinto County Courthouse
Historic Texas Cemetery
Harrell Plantation Cemetery

SAN SABA

Recorded Texas Historic Landmark
First State Bank Building
Official Texas Historical Marker
United Confederate Veterans,
William P. Rogers Camp No. 322
State Archeological Landmark
26 sites in Colorado Bend State Park
Historic Texas Cemetery
Chappel Cemetery
Harris Cemetery
Union Band Cemetery

SCURRY

Historic Texas Cemetery
Snyder Cemetery

SHACKELFORD

Official Texas Historical Marker
Hartfield Building

SHELBY

Official Texas Historical Marker
George Washington Green
Site of Truitt Community
Historic Texas Cemetery
Shady Grove Cemetery
Strong Cemetery
Tennessee Community Cemetery

SMITH

National Register of Historic Places
Blackstone Building

The Crescent Laundry
Donnybrook Duplex Residential
Historic District
East Ferguson Street Residential
Historic District
Elks Club Building
Jenkins-Harvey Super Service Station
and Garage
Marvin Methodist Church, South
People's National Bank Building
St. Louis Southwestern Railway
(Cotton Belt)
Short-Line Residential Historic District
Tyler U.S. Post Office and Courthouse
Official Texas Historical Marker
Antioch Baptist Church
Flewellen-Thweatt Cemetery
Site of Flora
Tyler Junior College
State Archeological Landmark
Two sites in Tyler State Park
Historic Texas Cemetery
Flewellen-Thweatt Cemetery

STARR

State Archeological Landmark
M. Guerra Store
Rodriguez Store
Nestor Saenz Store

STEPHENS

State Archeological Landmark
Stephens County Courthouse

SWISHER

Official Texas Historical Marker
Ozark Trails Association

TARRANT

National Register of Historic Places
Central Handley Historic District
Fort Worth U.S. Courthouse
Marine Commercial Historic District
Markeen Apartments
Near Southeast Historic District
Official Texas Historical Marker
Site of Confederate Park
First Baptist Church of White Settlement
Mary Daggett Lake
Billy Muth
Site of Oak Grove Methodist Church
White's Chapel Cemetery
Historic Texas Cemetery
Allen Cemetery
Wyatt's Chapel Cemetery

TAYLOR

Official Texas Historical Marker
Civilian Conservation Corps at Abilene
State Park

TITUS

Official Texas Historical Marker
Bridges Chapel Cemetery
Historic Texas Cemetery
Springhill-North Cemetery
Tranquil Cemetery

TOM GREEN

National Register of Historic Places
Harris Drug Store
Official Texas Historical Marker
Johnson Street Church of Christ
Historic Texas Cemetery
Baze Cemetery

TRAVIS

National Register of Historic Places
Austin Daily Tribune Building
Cox-Craddock House
Perry Estate/St. Mary's Academy
University Junior High School
Austin U.S. Courthouse
Recorded Texas Historic Landmark
Joseph and Mary Robinson Martin House
Edmund and Emily Miller House
Henry H. and Bertha Sterzing Ziller House
Official Texas Historical Marker
Austin Presbyterian Theological Seminary
Austin Presbyterian Theological Seminary
Campus
Blackshear Elementary School
Original Site of First Presbyterian Church
King-Tears Mortuary
Union Lee Baptist Church
State Archeological Landmark
Christianson-Leberman Building
Site 41TV1453
Two Shield Ranch (Eckols) sites
Historic Texas Cemetery
Austin State Hospital Cemetery
Baker Family Cemetery
Carl Beck Cemetery
Davidson-Littlepage Cemetery
J. L. Foster Gravesite
Freitag Cemetery
Hornsby Cemetery
Joseph J. Manor Cemetery
Merrilltown Cemetery
Patterson-Riley Cemetery
Roberts-Teague Cemetery
Williamson Creek Cemetery

TRINITY

Official Texas Historical Marker
Chita Cemetery
North Cedar Community

TYLER

Recorded Texas Historic Landmark
Tyler County Courthouse

UPSHUR

Recorded Texas Historic Landmark
Warren-Futrell House
Official Texas Historical Marker
Union Grove Schools
Historic Texas Cemetery
Shady Grove Cemetery

UVALDE

Official Texas Historical Marker
Utopia Baptist Church

VAL VERDE

Official Texas Historical Marker
City of Del Rio
Railroad Bridges over the Pecos
U.S. Army Camel Corps
Site of Vinegarroon

VAN ZANDT

Official Texas Historical Marker
Liberty Cemetery
Mars Community
Mt. Zion C.M.E. Church
William A. Wills
State Archeological Landmark
Sites 41VN107 and 41VN111 in
Purtis Creek State Park

WALKER

Recorded Texas Historic Landmark
Pritchett House
Official Texas Historical Marker
Site of Andrew Female College
Site of Cumberland Presbyterian Church
Joshua Houston
Huntsville "Walls" Unit
State Archeological Landmark
Sites 41WA202, 41WA203 and 41WA204
in Huntsville State Park

WASHINGTON

State Archeological Landmark
Brenham's Public Cisterns
Historic Texas Cemetery
Brenham Masonic Cemetery
Dallas Family Cemetery

WEBB

National Register of Historic Places
Laredo U.S. Post Office and Court House
Recorded Texas Historic Landmark
Benavides-Herrera House
St. Augustine Parochial School

Official Texas Historical Marker

City Cemetery
Holding Institute (Laredo Seminary)
Laredo Telephone Exchange
The Ramon Family
Historic Texas Cemetery
Aguilares-San Pedro Cemetery

WHARTON

Official Texas Historical Marker
Camp Zion Missionary Baptist Church
Danevang Community Hall
Joseph A. and Rachel Rabb Newman
Historic Texas Cemetery
Chesterville Cemetery
Egypt Plantation Cemetery
Wharton Cemetery

WHEELER

National Register of Historic Places
Battle of Sweetwater Creek
Recorded Texas Historic Landmark
Wheeler County Courthouse
Official Texas Historical Marker
Lela School

WILLIAMSON

Recorded Texas Historic Landmark
A.J. and Carolina Anderson House
Olson House
Official Texas Historical Marker
Brick Streets in Granger
First Baptist Church of Florence
Klattenhoff House
Mager Cemetery
Saints Cyril and Methodius
Catholic School

State Archeological Landmark

Merrell site 41WM2
Historic Texas Cemetery
Gordon/Garden Cemetery
Weir Community Cemetery
Whitehead Cemetery

WILSON

Recorded Texas Historic Landmark
White House Café and Saloon
Official Texas Historical Marker
Immanuel Lutheran Church
Site of Nockenut
Historic Texas Cemetery
Immanuel Lutheran Cemetery
Rector Chapel Cemetery

WISE

Official Texas Historical Marker
First United Methodist Church
of Bridgeport
Preskitt Cemetery
Historic Texas Cemetery
Rhoads Family Cemetery

WOOD

Recorded Texas Historic Landmark
First National Bank Building
Official Texas Historical Marker
First Baptist Church of Mineola
First National Bank of Mineola
Harry W. Meredith
C. W. Raines
George C. Reeves

YOUNG

Historic Texas Cemetery
Farmer Cemetery

ZAPATA

Official Texas Historical Marker
Site of Uribeno



**TEXAS
HISTORICAL
COMMISSION**

The State Agency for Historic Preservation

P.O. BOX 12276 • AUSTIN, TX 78711-2276
PHONE 512/463-6100 • FAX 512/463-8222
www.thc.state.tx.us



*The Texas Historical Commission —
helping Texans look to the future to preserve
the fabric of our past.*



TEXAS
HISTORICAL
COMMISSION

The State Agency for Historic Preservation

P.O. BOX 12276 • AUSTIN, TX 78711-2276
PHONE 512/463-6100 • FAX 512/463-8222
www.thc.state.tx.us